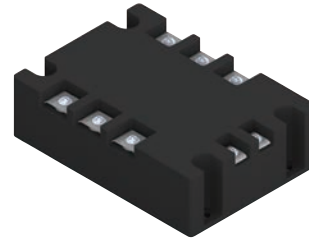


# SDT / SAT (60 - 100A)

## Features

- DC/AC input, AC output
- With internal RC soak up network
- Zero voltage turn-on, zero current turn-off
- Optically isolated input and output
- Two-way SCR output
- Liquid epoxy-filled, metal(cu)base



## Order Code:

SDT 3 \*\* A \* \* \*  
a b c d e f

a : Model : SDT = DC Input, AC output ; SAT = AC input, AC output  
b : Output Voltage : 3 = 380 VAC  
c : Rated Current : 60A, 70A, 90A, 100A  
d : Turn-On Type : NIL = Zero-On  
e : Special Code : NIL = With LED  
f : Option : NIL = Without Safety Cover

## Input

Type	SDT	SAT
Input Voltage Range	3~32 VDC	90~280 VAC
Input Current	≤ 50mA	≤ 20mA
Min Release Voltage	≥ 1VDC	≥ 25VAC

## Output Load

Type NO	60A	70A	90A	100A
Max. Rated Load Current Range	60A	70A	90A	100A
Max. Surge Current (10ms)	600A	700A	840A	1000A
Load Voltage Range	380VAC			
Transient Overvoltage	800Vp			
Max. ON-State Drop Voltage	2VAC			
Max. Leakage Current	≤ 10mA			
Max. Turn - ON Time	≤ 10ms (Zero-on)			
Max. Turn - OFF Time	≤ 10ms			
Operate Frequency	47~400Hz			
Max. Power Dissipation	5 W/A			
Min. OFF-State dv/dt	200V/ μ S			

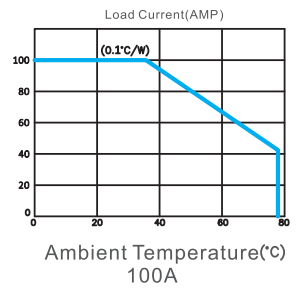
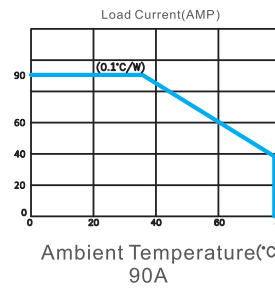
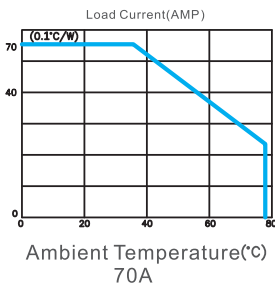
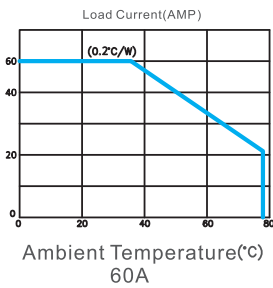
為了持續的改進，敝司有權在不影響規格範圍的情況下修改設計。

In the interest of continuous development, our companies reserve the right to alter designs within specification range.

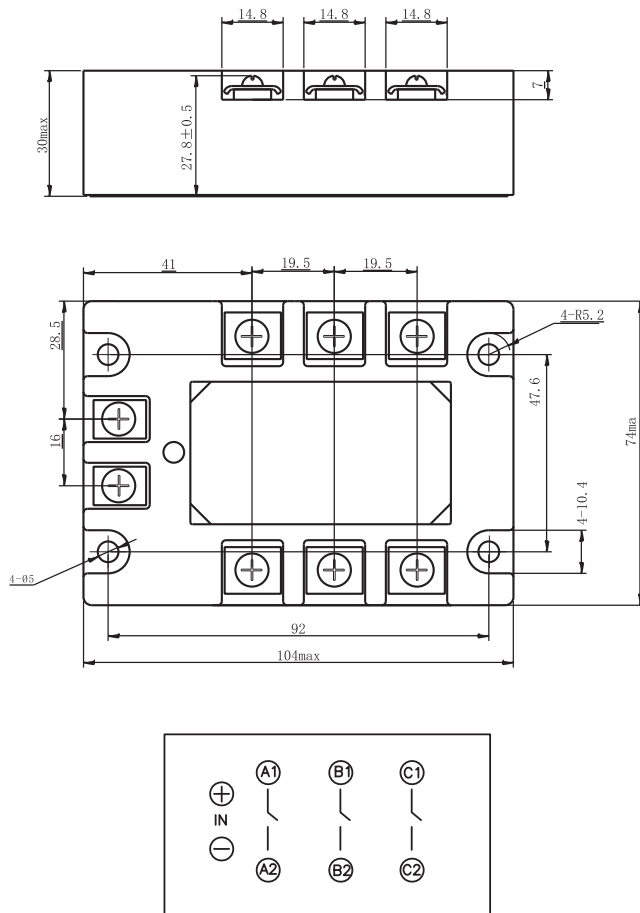
### General Rating

Insulation Resistance	$\cong 1000M\Omega$
Insulation Between Input-Output	2000 VAC
Insulation Input-Output To Case	2000 VAC
Operating Temperature	-30°C ~+80°C
Storage Temperature	-40°C ~+100°C
Unit Weight	Approx 400g

### Load Current Derating Curve



### Dimensions : (Unit : mm)



為了持續的改進，敝司有權在不影響規格範圍的情況下修改設計。

In the interest of continuous development, our companies reserve the right to alter designs within specification range.